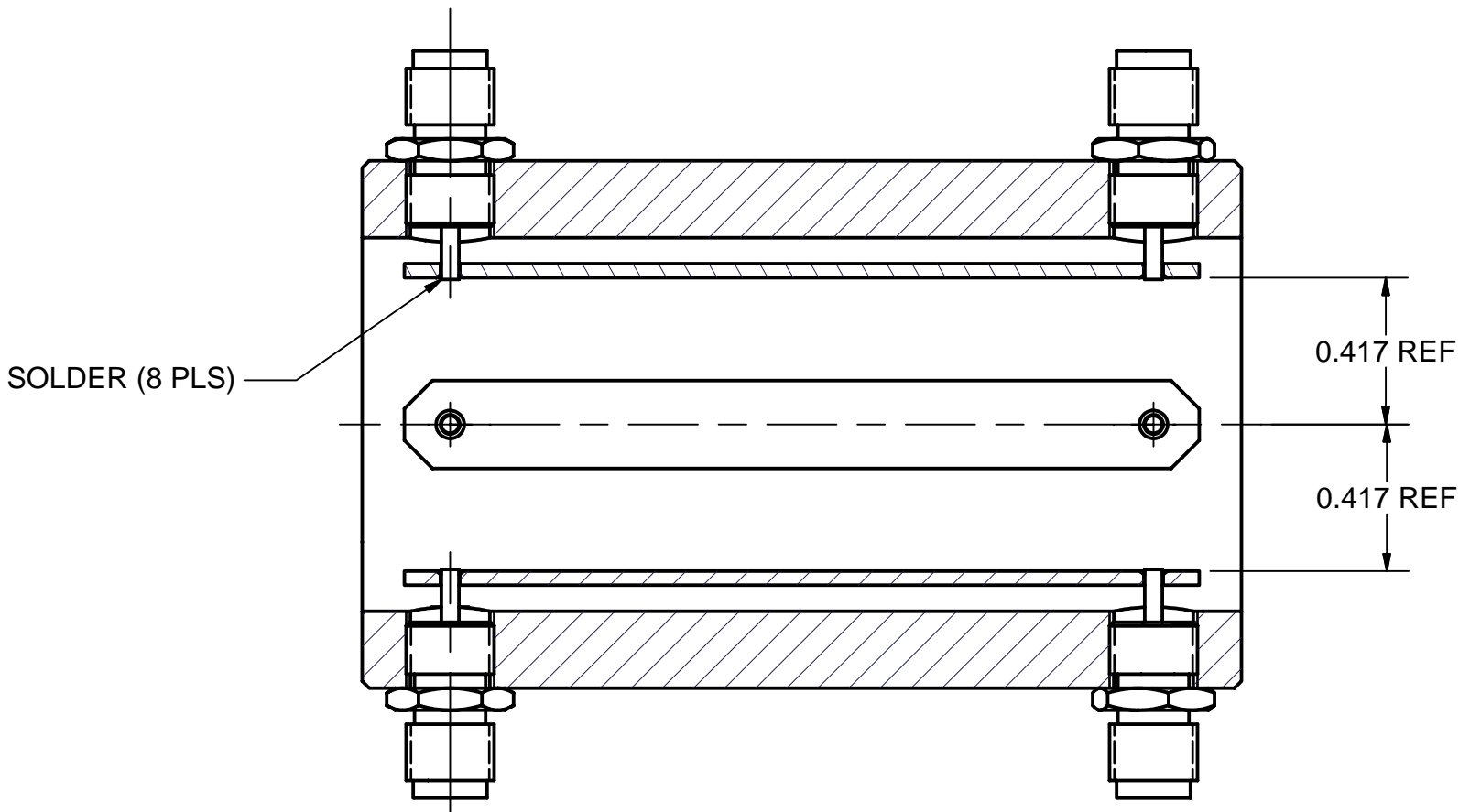
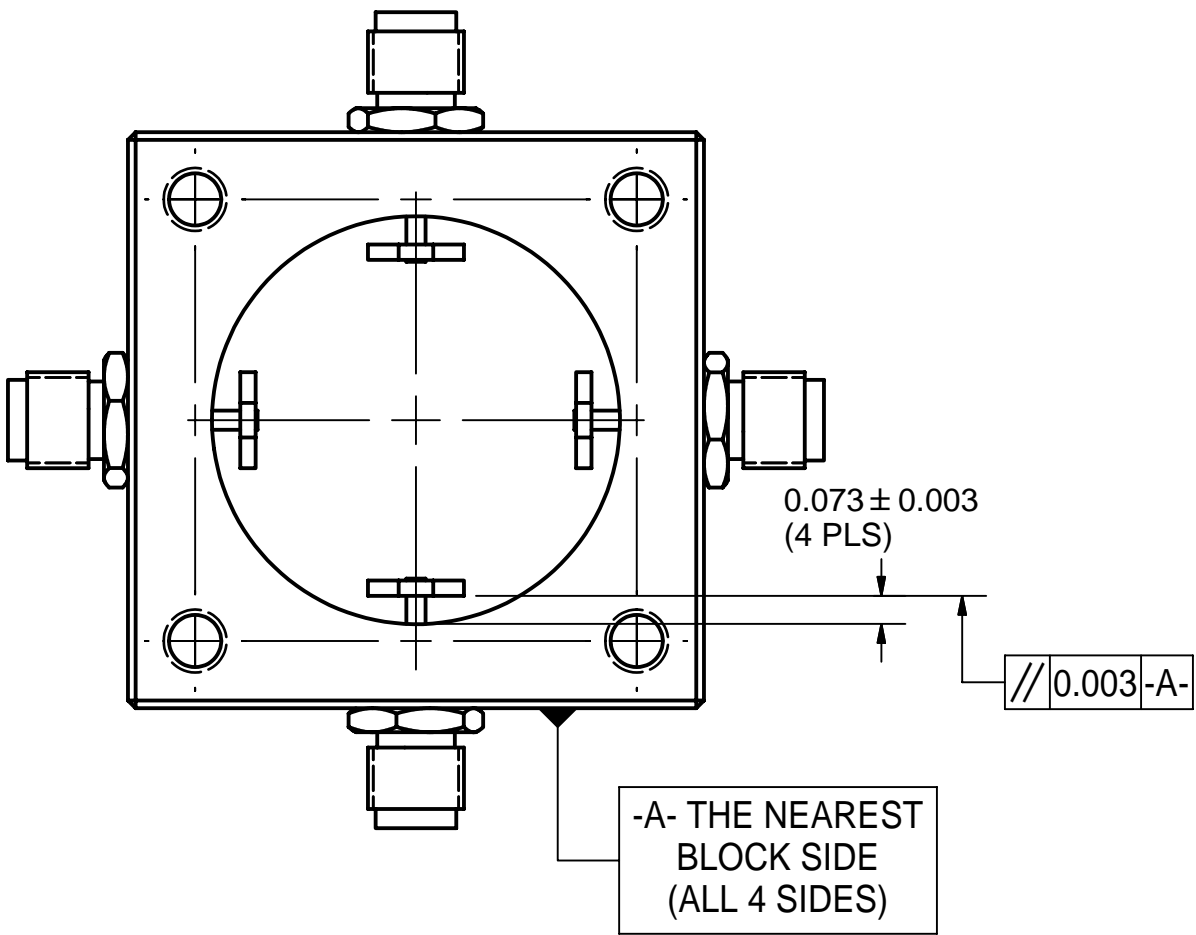
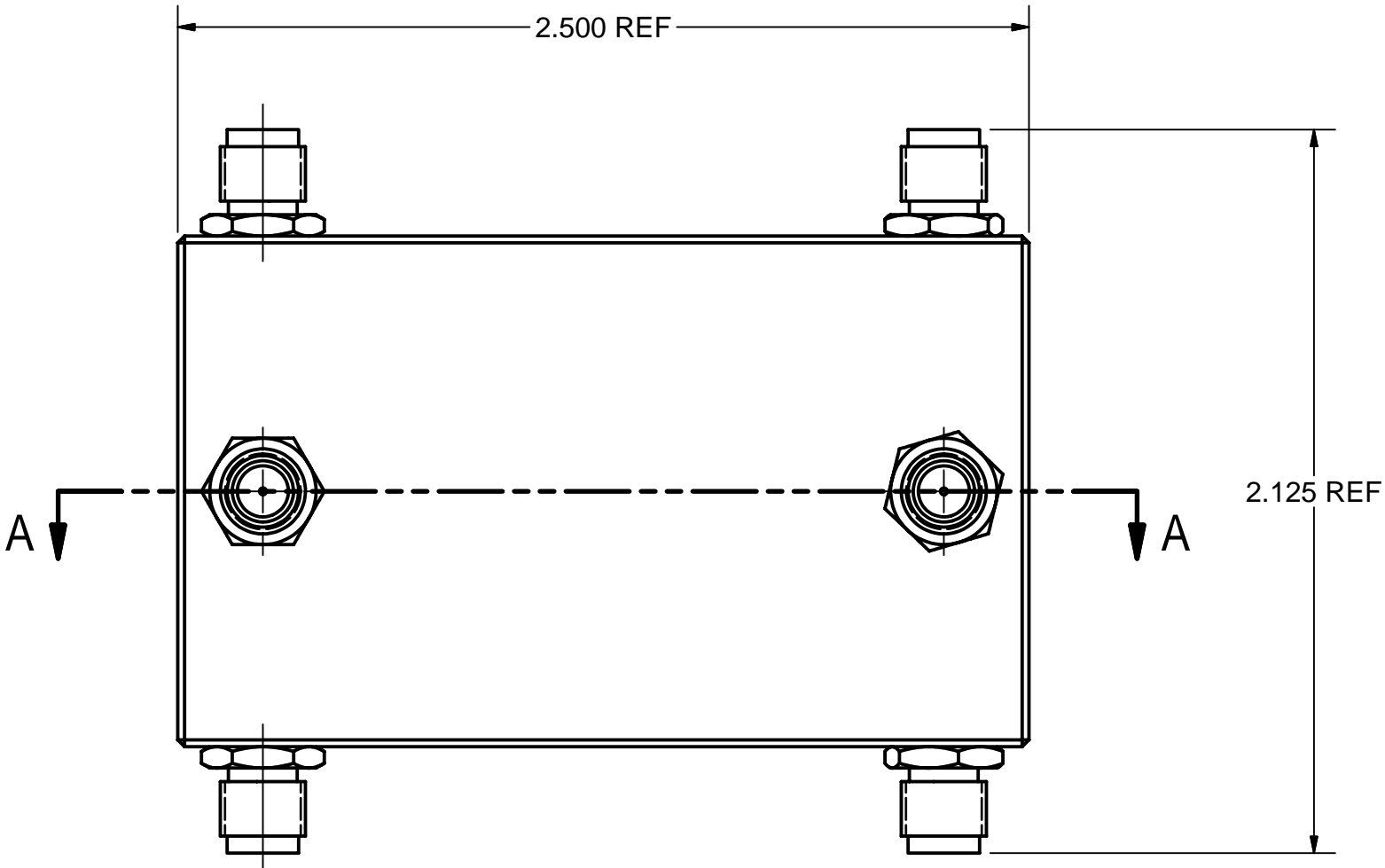


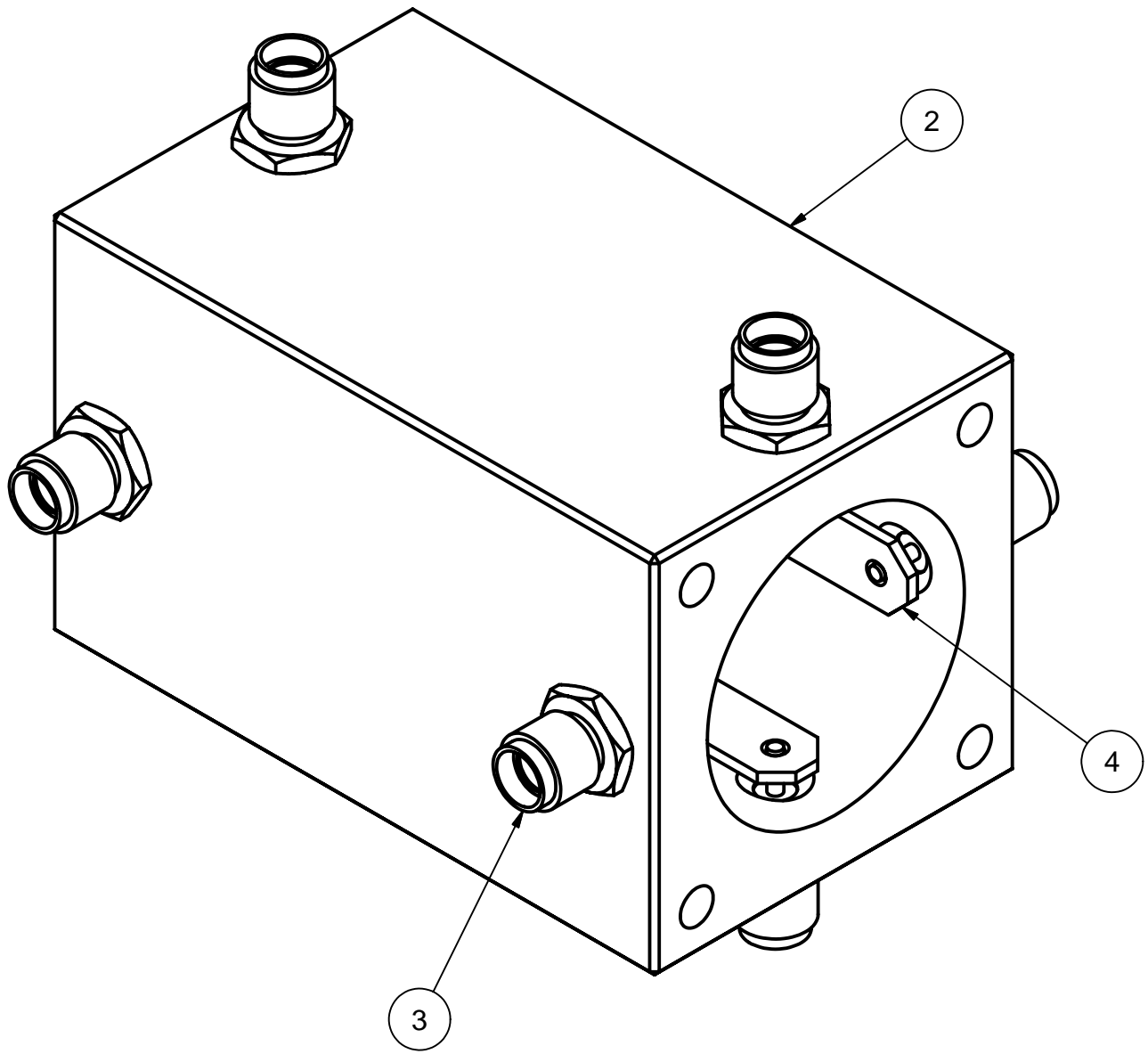
REVISIONS				
SYM.	ZONE	DESCRIPTION	DATE	APP.



SECTION A-A
SCALE 2 : 1



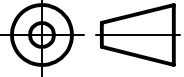
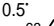

-A- THE NEAREST
BLOCK SIDE
(ALL 4 SIDES)



- 1 WPM BLOCK ASSEMBLY
- FILE NAME: 7102-039
SHEET NO.: 1
DFT. SCALE: 2 : 1
MATERIAL:
QTY: 1
NOTES: 1. PART ITEM 3 APPROVED ONLY FOR TEST CRYOMODULE.

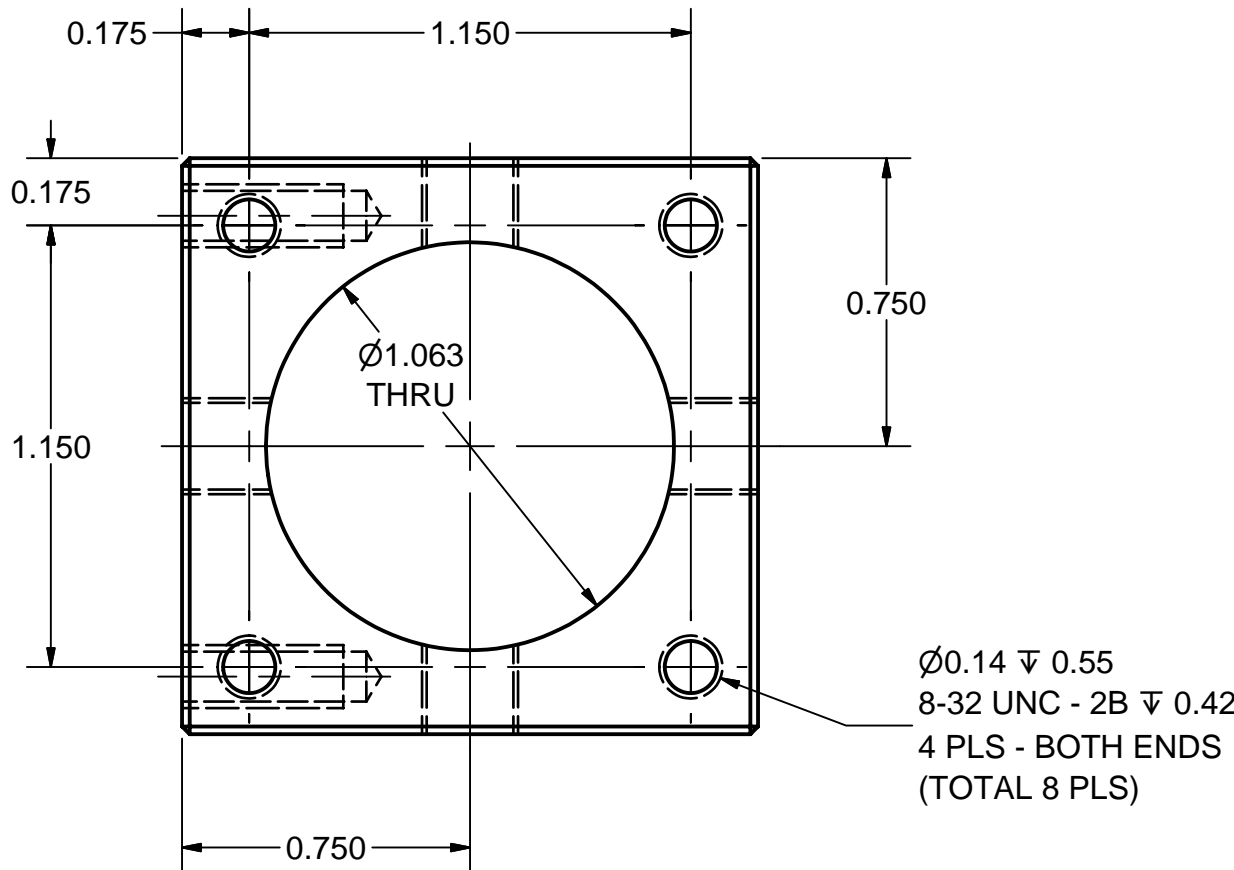
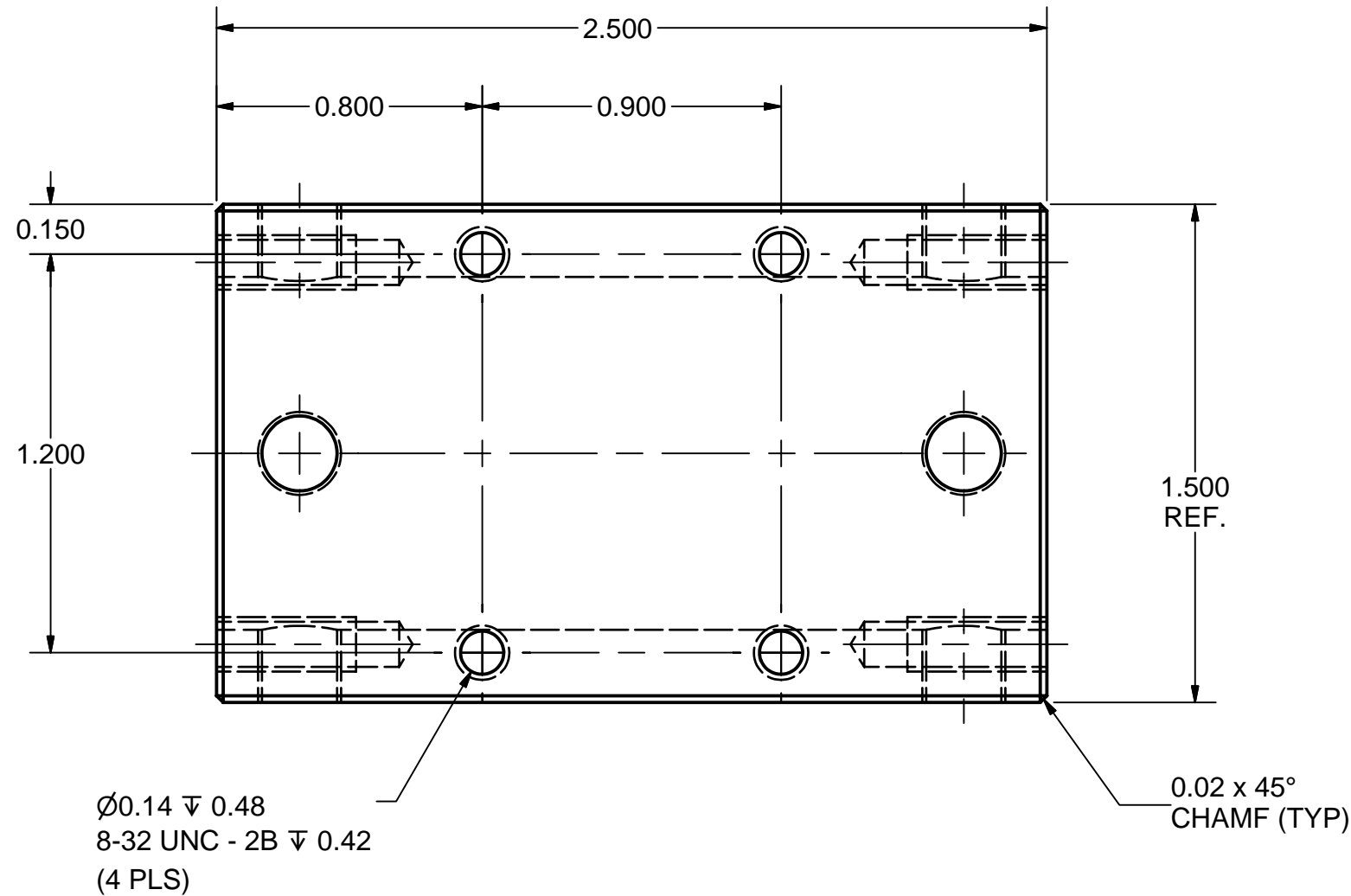
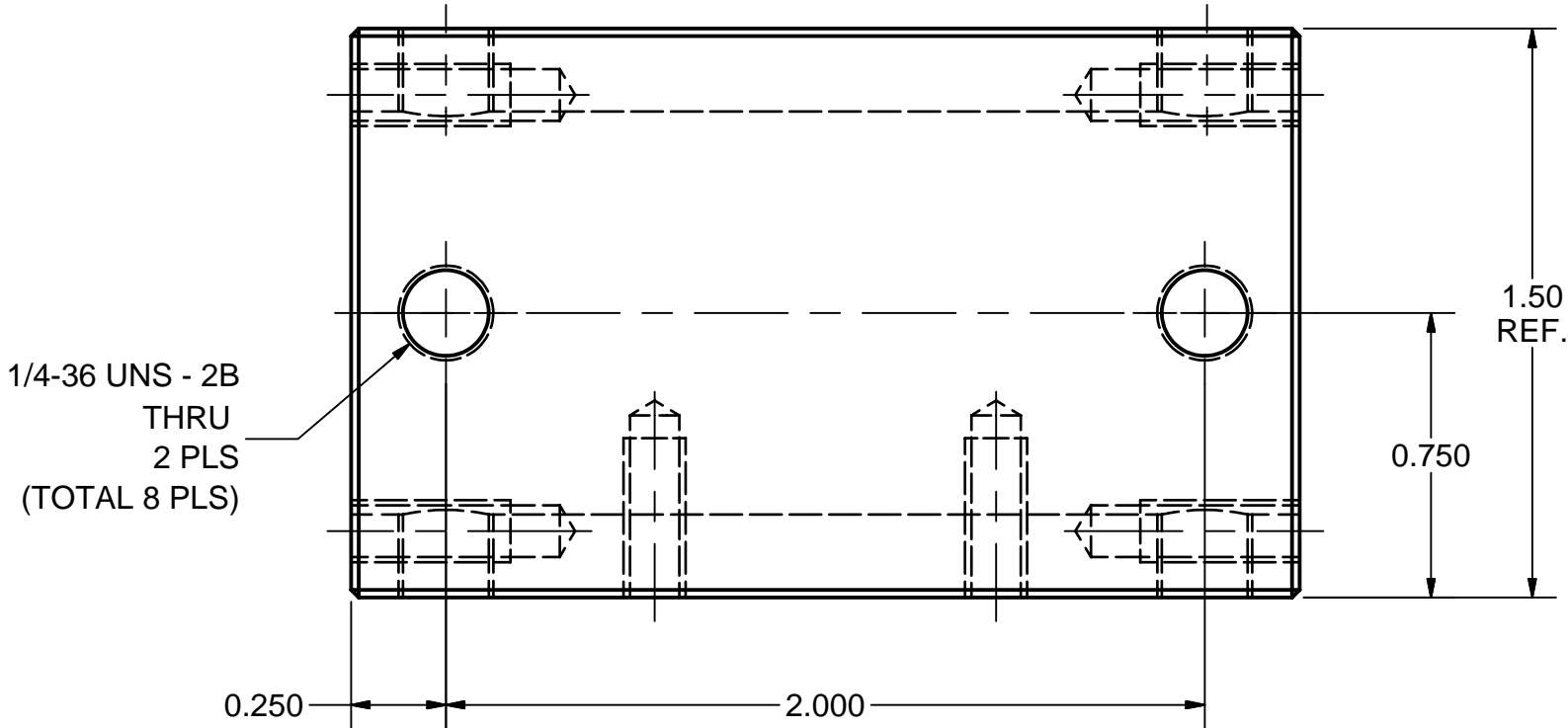
Release of final PO version for Meyer Tool - June 19, 2007.

4	SHEET 2	WPM STRIP	4				
3	PUR.	SMA BULKHEAD RECEPTACLE	8				AMPHENOL'S 901-9911 (SEE NOTE 1)
2	SHEET 2	WPM BLOCK	1				
1	7102-039 (SH. 1)	WPM BLOCK ASSEMBLY	X				

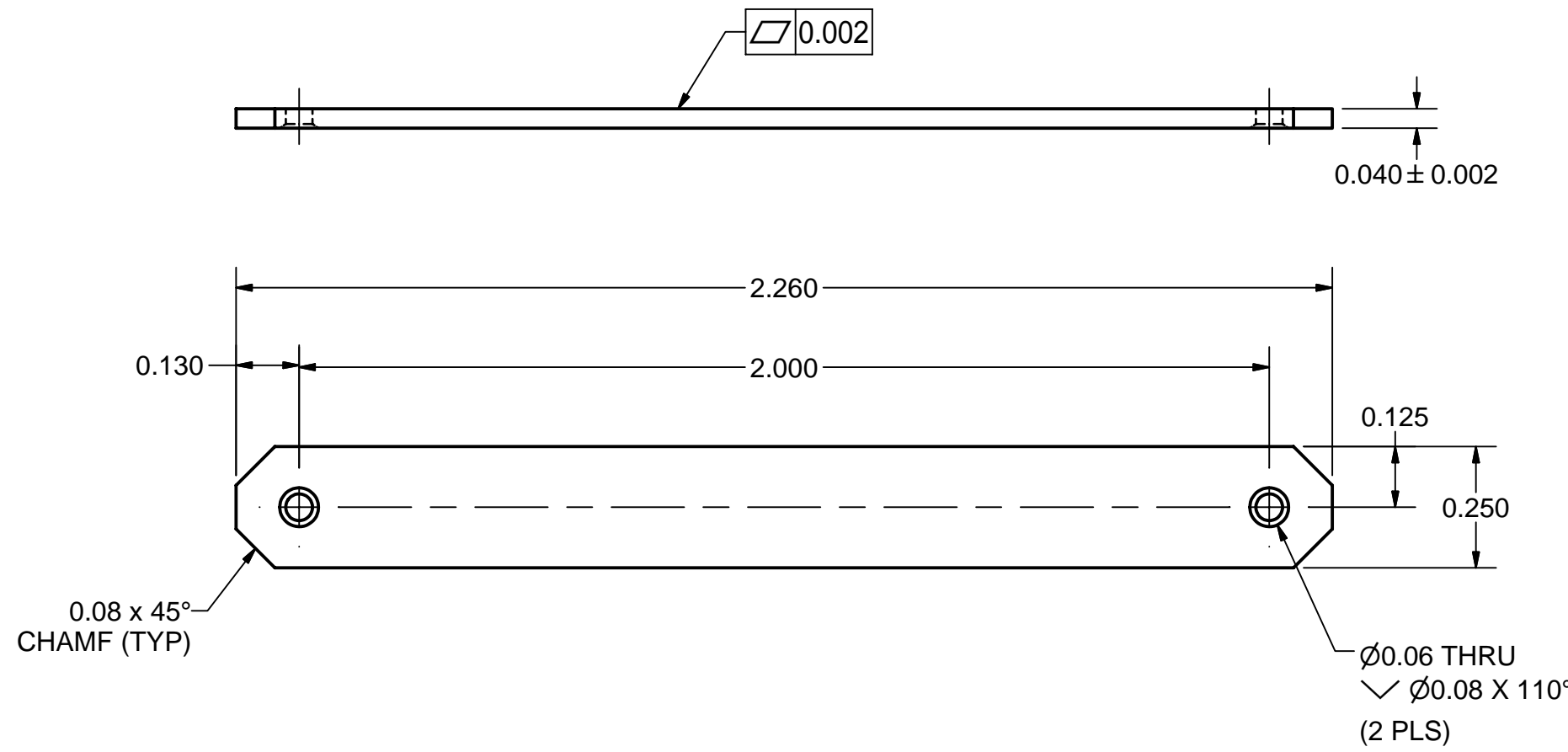
	ITEM	DWG. NO.	DESCRIPTION			G1	G2	G3	REMARKS	REV.
							QUANTITY			
D	PRINT DISTR.	PLOT DATE: 6/19/2007 CAD FILE NAME: 7102-039.idw								
	CR1	UNLESS OTHERWISE SPECIFIED: DIMENSIONS ARE IN INCHES; TOLERANCES ON: .0 ± .02 .00 ± .010 .000 ± .005 FRACTIONS ± 1/32 ANGLES ± 0.5° ALL SURFACES 		<div> CORNELL UNIVERSITY FLOYD R. NEWMAN LABORATORY ITHACA, NY 14853</div>						
SH. NO. 1 OF 2	7102-039			ERL INJECTOR CRYOMODULE WPM BLOCK WPM BLOCK ASSEMBLY DETAIL						
REV.		CHECKED BY: V.M.	DRAWN BY applin	DRAWN FOR V.V.	DATE 8/18/2006	SCALE	D		7102-039 SH. NO. 1 OF 2	REV.
		APPROVED BY: M.L.								

FOR MACHINING LUBRICANT USE ONLY
ALKALINE DETERGENT LUBRICANT CIMSTAR 40
OR EQUIVALENT APPROVED BY CORNELL LEPP

REVISIONS				
SYM.	ZONE	DESCRIPTION	DATE	APP.
A	C2	REMOVED 10 MICRON SILVER PLATE NOTE - ITEM #4	6/19/07	TIO

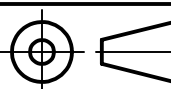
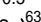



2 WPM BLOCK
FILE NAME: 7102-039
SHEET NO.: 2
DFT. SCALE: 2:1
MATERIAL: 1-1/2" OFHC 102 COPPER SQ. BAR
QTY: 1 PER ASSEMBLY
NOTES:



4 WPM STRIP
FILE NAME: 7102-039
SHEET NO.: 2
DFT. SCALE: 3:1
MATERIAL: OFHC COPPER
QTY: 4 PER ASSEMBLY
NOTES:

Release of final PO version for Meyer Tool - June 19, 2007.

		ITEM	DWG. NO.	DESCRIPTION			G1	G2	G3	REMARKS		REV.		
								QUANTITY						
D		PRINT DISTR.	PLOT DATE: 6/19/2007 CAD FILE NAME: 7102-039.idw											
7102-039 SH. NO. 2 OF 2		CR1	UNLESS OTHERWISE SPECIFIED: DIMENSIONS ARE IN INCHES: TOLERANCES ON: .0 ± .02 .00 ± .010 .000 ± .005 FRACTIONS ± 1/32 ANGLES ± 0.5° ALL SURFACES 		<div>CORNELL UNIVERSITY  LEPP CORNELL UNIVERSITY Floyd R. Newman Laboratory Ithaca, NY 14853 LABORATORY FOR ELEMENTARY PARTICLE PHYSICS</div> <div>ERL INJECTOR CRYMODULE WPM BLOCK WPM BLOCK DETAILS</div>									
A		REV.	CHECKED BY: V.M. APPROVED BY: M.L.		DRAWN BY applin		DRAWN FOR V.V.		DATE 8/18/2006		SCALE D	7102-039 SH. NO. 2 OF 2 REV. A		

FOR MACHINING LUBRICANT USE ONLY
ALKALINE DETERGENT LUBRICANT CIMSTAR 40
OR EQUIVALENT APPROVED BY CORNELL LEPP